

The illustration depicts a person from the chest up. Their face is completely obscured by a white, draped fabric or garment. On top of their head is a large, dark, textured mass that resembles a large, crumpled piece of fabric or a complex, organic structure. The overall style is graphic and minimalist, using bold black outlines and flat colors (white, grey, and red for the text).

ILLUSTRATIONS/ PORTRAITS
EVIE DAINES



DAVID BOWIE:

Drawn using a graphics tablet on Illustrator. A variety of density's were used to build up colour.



JENNIFER LAWRENCE:

Drawn by hand and coloured in using watercolours



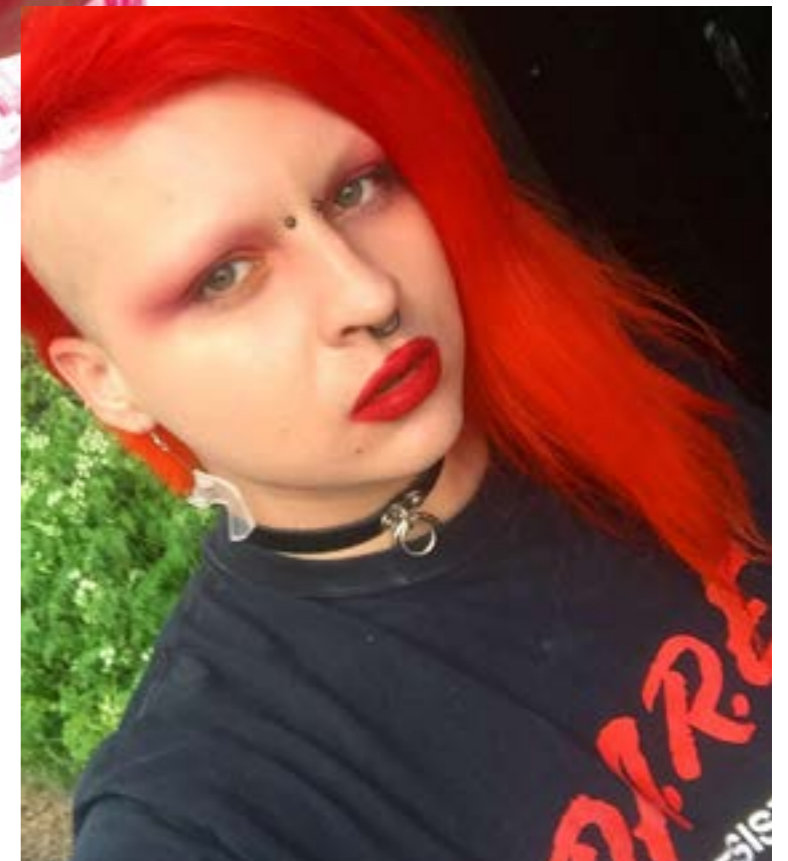
WOLVERINE (HUGH JACKMAN):

Sketched in pencil then shaded with a combination of pencil, charcoal and red pencil



WILSON:

A combination of free-hand drawing mixed with photoshop layering to improve vibrancy and to add texture.



JOHN GALLIANO



ISSEY MIYAKE



GRACE ELLIOT:

All drawn using illustrator to create an outline. Textures and colourings were then used to add depth to the drawings.





JAKE

MOST RECENT WORK



DERRICK:

Drawn by hand and coloured in with a variety of line thickness' and felt tip. Finished by being scanned in and altering brightness and contrast on photoshop.

MOST RECENT WORK

